

CD100MP3

HDD or CF MP3 Player For Your Rowe/AMI CD100 Jukebox



- Works with all laptop/notebook HDD's
- Supports all layer-III (MP3) encodings
- Variable or fixed bit rates to 320 Kbps
- Detects master/slave drive setting
- Automatic power down on no activity

The CD100MP3 is a micro-computer based hard disk player that replaces the entire CD mechanism and decoder in your ROWE/AMI CD100 jukebox. The hard disk player works with any jukebox that uses the 408322xx Central Control Computer. This includes models CD100A, B, C, D, E plus others. The CD100MP3 plugs into the 3-pin P10, P11 or P12 communication connector, in place of the CD mechanism unit. The player takes only seconds to install, without any modifications to the jukebox. Best of all, the hard disk player will not skip and will never need to be cleaned or lubricated. The delay between CD changes are also eliminated which provides nearly continuous song play. The player works with any 44-pin ATA/IDE 2.5 inch laptop/notebook hard drive from 2GB and up. Uses the FAT32 filesystem which is compatible with Windows, Mac, Linux and other systems. At the minimum, a 100 CD jukebox, each having 16 tracks (1,600 songs), will require an 8GB hard drive or Compact Flash card at the CD quality bit rate of 192 Kbps.

DISCLAIMER – PLEASE READ

The CD100MP3 kit was developed for jukebox owners for non public performance use. We do not supply jukebox licenses and do not have any knowledge of what is required. It is the jukebox owners responsibility to obtain all applicable licenses for public performance of copyright music.

SaXXOT

SaXXot Deutschland GmbH, Zeppelinstrasse 73, DE 81669 München
Tel.: +49 (0)894141446-00 Fax: +49 (089) 4141446-75, info@saxxot.de - www.saxxot.de

Assembling the Hard Disk Drive or Compact Flash Memory Card



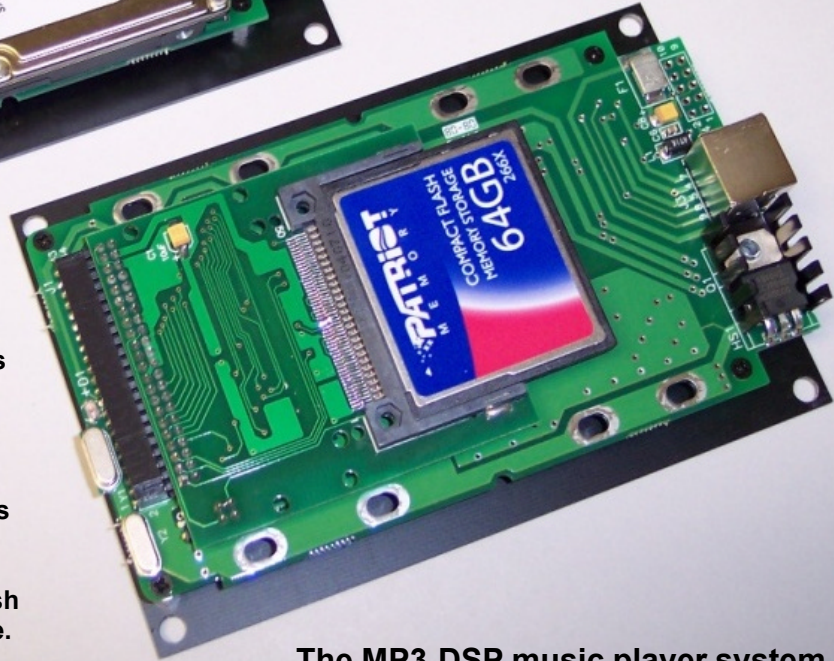
This is the MP3 digital subsystem player circuit board with a hard disk drive attached.

The Hard Drive is not included !

This is the Compact Flash Memory card version. It requires the "IDE to CF" adapter board which plugs into the 44-pin IDE connector.

The "IDE to CF" adapter board is available as a separate item.

The Hard Drive or Compact Flash Memory cards are also available.



The MP3-DSP music player system



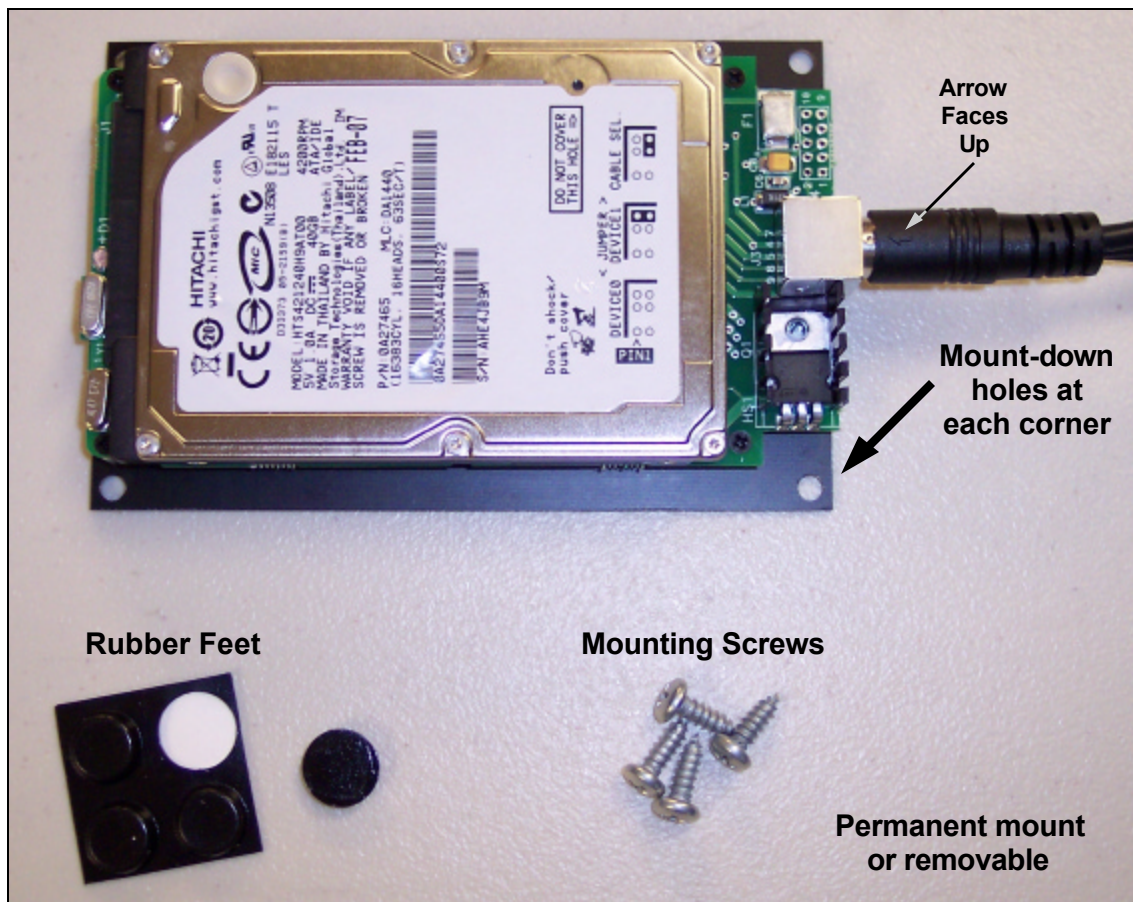
The hard disk drive has two sets of connector pins. 43-pins on the left side and 4-pins on the right.



Position the disk drive onto the circuit board then align the left side pins with the 44-pin IDE connector.



Slide the disk drive forward into the connector. The 4-pins on the right are not used.



Connecting IDE 2.5" Hard Drives Using the USB 2.0 External HDD Cable



The 2.5" IDE Drive has one connector on the rear. This 44 pin connector is IDE DATA and IDE Power combined. This connector has a blocked socket and must be installed in the correct orientation. Match the blocked socket with the missing pin on the drive mechanism.

2.5" IDE Mechanisms get their power from the USB port.

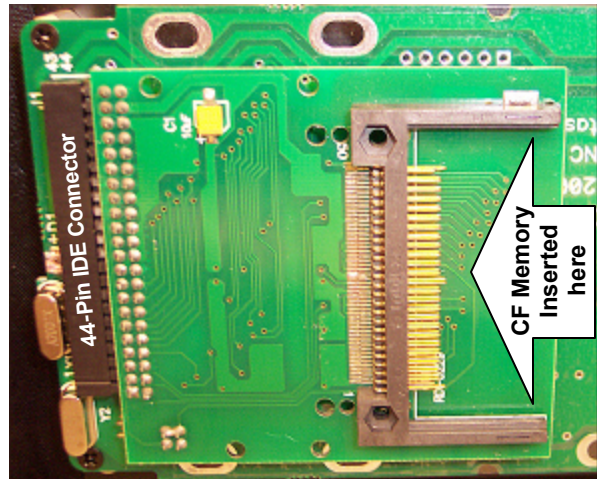
Optional Compact Flash Card Adapter

The 44-pin IDE adapter allows Compact Flash memory card usage. Works with FAT32 formatted cards 2GB and higher.

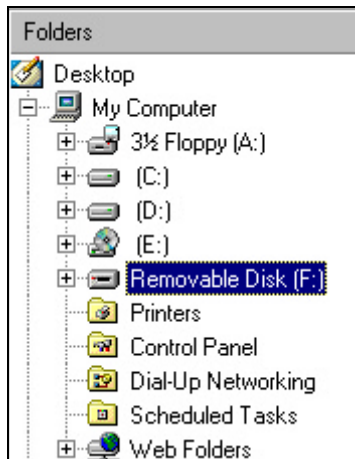
Approximate song capacities:

CF Size	@128 Kbps	@192 Kbps
2GB	500	400
4GB	1,000	800
8GB	2,000	1,600
16GB	4,000	3,200
32GB	8,000	6,400
64GB	16,000	12,800

Insert the memory card into the adapter then plug the adapter into the 44-pin IDE connector.



Creating New Folders for Disc Numbers



Assemble your disk drive to the USB external HDD board.

Open **Windows Explorer**

Plug in the external HDD USB cable into your computer.

Within a few moments, a new disk drive letter should appear. For this example we see "Removable Disk F:"

If you did not see a new disk drive letter, follow the instructions in your USB manual about setting up your new disk drive or you can visit www.cdadapter.com and go to the FAQ section.

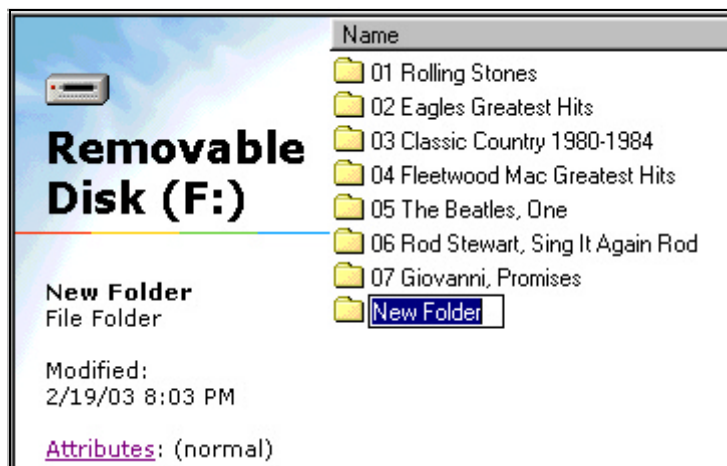
To create a new folder ...

Single click the new drive letter to hi-lite,
Click **File | New**
Then click on **Folder**

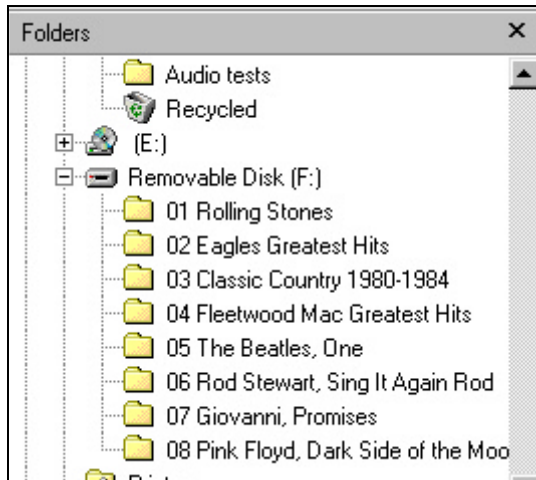
You should see a **New Folder** name.

Change the name ...

The first two letters must be your disc number from 00 to 99. The following letters can be any text you choose.



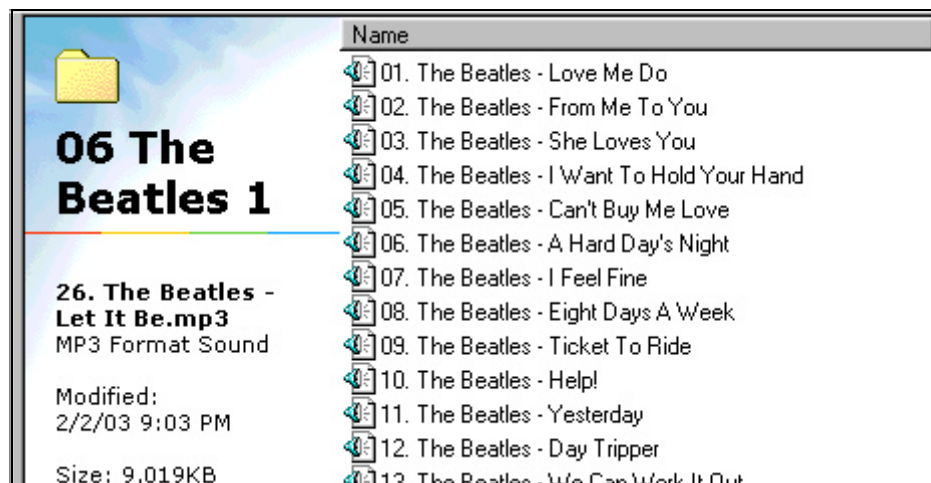
Drag & Drop Your MP3 Song Files



Select the disk and directory for your source of MP3 song files then click the + at "Removable Disk (F:)" to expand the folders.

If you wish to store the entire set of songs, click on the first song at the top, scroll down to the last song, hold down the SHIFT key then click the last song. The entire list should be hi-lighted. Move your mouse over the list then hold down the left mouse button and drag the list to your F: drive folder.

If you wish to store a single song, place your mouse over the song then hold down the left mouse button and drag it to your F: drive folder.



Setting the Selection Position of Your Songs

Previously, folders were numbered to identify disc positions, here, MP3 song names must be numbered to identify their track position. Most MP3 "rippers" or "extractors" will provide this track numbering feature for you. All characters after the two digit track number are ignored and can be any text you choose. Just like for CD's, you must have sequential track numbers, you can not have skipped sequences.

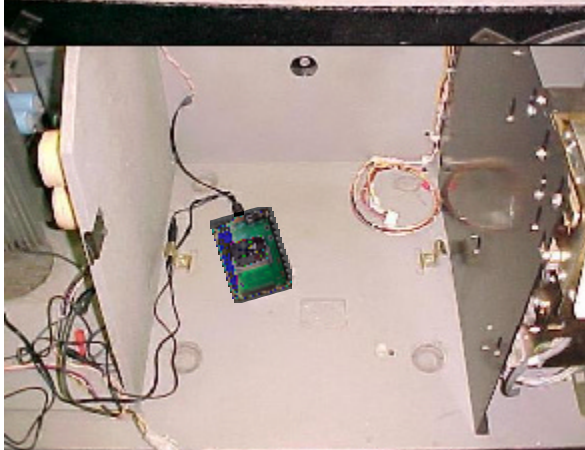
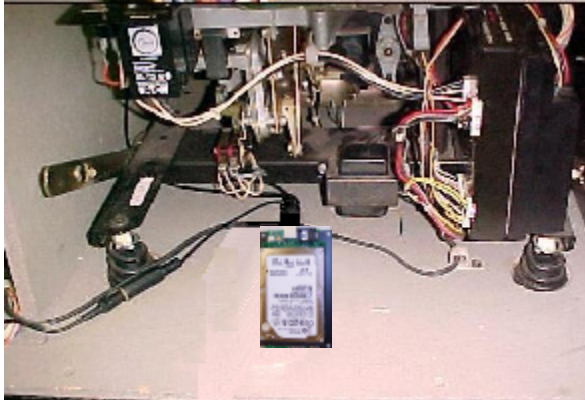
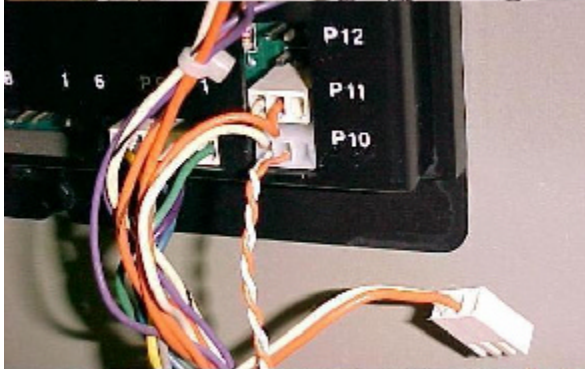
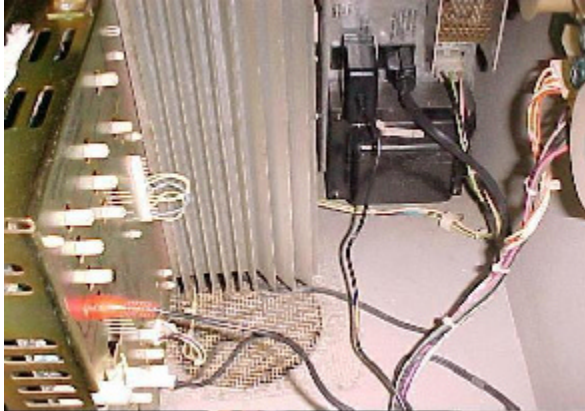
MP3 song files can be changed at any time, simply delete the old file and insert the new one.



If you need to change or add the selection position number of a song, place the mouse over the song then right click and select **Rename**.

Position your mouse to the start of the song name then left click. You should see a blinking cursor waiting for you to edit.

Rowe/AMI CD100 Jukebox Installation



The CD100MP3 kit was designed to upgrade your ROWE/AMI CD100 Jukebox to play MP3 music files from a disk drive or Compact Flash Memory Card.

Storing Your MP3 Song Files On The Hard Disk

Assemble your hard disc drive to the USB external HDD board. Start up Windows Explorer then plug in your USB connector. A new drive letter should appear in the left frame. Clear all files from your disk drive. Create 100 new folders for each of the CD's. The first two letters of each folder name must begin with the two digit disc number (00, 01, 02, ... 97, 98, 99). The following letters can be any name or description you choose. Within each folder drag & drop your MP3 song files. The first two letters of the file name must begin with the two digit track number, 01 to 99.

Hooking Up The Digital Music Player To Your Jukebox

Assemble your hard disc drive to the CD100MP3 digital music player board. Plug in the 9-pin mini DIN connector (arrow or notch at the top). At the CCC connector position (P10, P11 or P12), unplug the 3-pin CD Mechanism connector and plug in the CD100MP3's connector. Disconnect the CD mechanism RCA audio plugs from the amplifier and plug in the CD100MP3. The CD100MP3's wall adapter plugs into the jukebox power supply service outlet.

CD Initialization

To perform full CD initialization, place the jukebox service switch into the SERVICE position, type 30 on the keypad then press Popular. Move the Service switch back to the Normal position. Full initialization takes about 2 to 3 minutes. The CD100MP3's LED will flash only during real activity such as when playing or initializing. This provides the indication of when CD initialization has been completed. Song play may not occur during initialization due to high speed operation.

Playing MP3 Songs

Your jukebox operates exactly as it did before, two digit disc number and two digit track number. The noticeable difference will be the elimination of delay between CD changes.

The Main Advantage

Maintenance free... no skipping, no mechanical wear, no adjustments and never needs cleaning or lubrication. The hard drive even turns itself off after 30 seconds of no activity.